

Tailift's Commitment & Vision

- To be a strong partner
- Provide the toughest trucks for even the most challenging applications
- Environmentally friendly with less emissions and the lowest fuel consumption
- To extend customer service worldwide to satisfy all customer need

Tailift Group

GROUP HEAD OFFICE :

No. 269, Sec 1, Shein Lin Rd., Taichung, Taiwan. (R.O.C.)

TEL:+886-4-25666100 FAX:+886-4-25671670

Website:<http://www.tailift.com> E-mail:insales@tailift.com.tw

Tailift USA:

Tailift USA Co., Inc. 3939 E. Brentstone Street Ontario, CA 91761 U.S.A.

TEL: 909-930-9801, 909-930-9802 FAX: 909-930-9739



1.5-5.0ton

I.C FORKLIFT TRUCKS



Tailift I.C 1.5-5.0 ton Forklift Trucks

Tailift



Fit All Your Need

Innovative & Revolutionary Forklift Truck

Based in Taiwan, was established in 1973.

Tailift group is one of the world's leading manufactures of material handling equipments.

Tailift is an ISO 9001 quality management system company. All series are obtained with CE and EPA certification.

Tailift forklift truck involved the best in virtual, bench and field-testing to ensure the final product met the high quality standards demanded. Tailift forklift bring you great comfort and unmatched productivity.

Each of these advancements demonstrates Tailift's commitment to be a strong partner and provide the toughest trucks for even the most challenging applications.

Features and Benefits

Easy Operation / High Stability / Durability / Great Performanc / Ergonomics / Optimal Visibilitye / Easy Maintenance

Tailift

Easy Operation

Extensive operation compartment provide an unobstructed view in any positions. An easy-operating control translates into better performance and product efficiency.



Electric F/R control lever

The forward/reverse lever offers easily accessible fingertip control. It is easy to reach and also for fast and easy directional changes. Using the electric solenoid to control F/R is also improved flexibility of operation.



Light Lever

The lever is integrated into the electric F/R lever. It is combination of light switch and turn signal.

New Multifunctional Cobo Instrument Panel

A large and easy-to-see multifunctional display is perfectly centrally located in front of the eye of the operator. This new multifunctional panel provides all information necessary for the operator and service maintenance.



Steering wheel with assist knob

This steering wheel gives improved vehicle maneuverability. It simplifies operator entry and exit.



Parking Brake Lever with Inter-lock

The lever is released by click the top button pressed and further improves safety.



Easy Entry and Exit

Low height from floor and secure non-slip steel step let operation easy to step into and out of the forklift.



Tiltable Steering Column

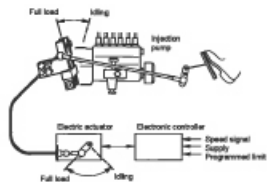
The steering column can be adjusted help to provide the preferred driving position.

- | | |
|--------------------------------|----------------------------------|
| A Warning check | G Charge warning |
| B Hydraulic temperature | H Head light |
| C Oil pressure warning | I Fuel gauge |
| D Brake light | J Hour meter |
| E Neutral Gear | K Water temperature gauge |
| F Directional Indicator | |

High stability

The Tailift's new forklift truck features provide greater stability. Full range of safety equipments and features that help operator and reduces the risk of accidents.

Speed Limiter (optional)



Integral Heavy Duty Overhead Guard & Chassis

No-bolt completely welds to form a one piece of rigid overhead guard and chassis. This one piece construction gives additional strength to the entire structure. This structure allows truck to be use on uneven surfaces for long working period and not bend.



Mast Lock System (optional)

The mast lock system automatically locks all lifting and tilting functions when the operator leaves the seat. It is to prevent operator from using the hydraulic functions and drive forklift truck when operator is not seat in proper position.



▲ High Mounted Rear Combinational Lights

The rear combinational light can be optional mount on top of overhead guard. It is to improved visibility in the working place.

Neutral Safety Start System

The electric F/R lever has to be in neutral position before the engine can be started.



Tilt Cylinder Boots (optional)

Reduce hydraulic leaks by limiting cylinder rod scouring and seal damage caused by dirt accumulation.



Asbestos Free Brake Shoe

High-friction brake shoes are free of asbestos.

Great Performance

High performance, Fuel efficient , Emission control engines

Tailift forklift trucks use world well know engines meet and comply with the EU stage III and US EPA tier III regulations of Directive 97/68, LOW EMISSION AND LOW NOISE to protect environment. All diesel - gasoline and LPG engine environmentally friendly with advanced combustion technology reducing fuel consumption.

Tailift transmissions

MD series transmission 1.5-3.5t with single-speed and 4-5t with two speed forward & reverse, hydrodynamic transmission perfectly tuned, allows the best precision and smoothness in handling activities. The electric F/R lever gives the operator easy directional control without removing a hand from the steering wheel.

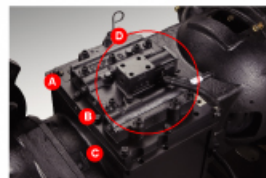


Torque converter



Standard Fork Carriage (6 rollers)

All mast assembly has a 6-roller carriage that is standard on Tailift forklift truck. This make lifting more smooth and increased capacity. 1220mm high load bracket is standard for increased load control and operator protection.



Tailift Self-design Power-shift Transmission

- 35 micron filter with check valve
- 125 mesh shielded sump strainer
- 10 discs in clutch packs 5 steel & 5 fiber composite
- each transmission is bench tested
- easy disassembly for rebuilds
- magnetic drain plug
- solenoid control valve



Hydraulic Lift Cylinder Safety Check Valve

The cylinder has been new design by adding safety check valve to absorb mast drop speed automatically to avoid crashed floor and damage goods, also reduced noise.



Tailift Hydraulic Steer Axle

The great durability new rear axle, increased steer angle and steering control for easy maneuvering and lower maintenance.

Optimal Visibility & Ergonomics

High level of operator visibility



High level



Backward visibility



Forward visibility



Deluxe Suspension seat (optional)

Grammer suspension seat give you the very best in customized comfort and safe, healthy posture. Features with ergonomic sharp design, suspension travel to accommodate operator weight, generous Fore/Aft, seat belt and seatback angle adjustment to optimize your comfort, posture and performance.



New Front Cowl

Large Foot Space



Joystick hydraulic control (optional)

The joystick hydraulic control system use hydraulic lever for lifting/lowering forks and tilt mast. The design provides greater ergonomics and improves productivity. Also provide comfortable armrest attached to the seat.

Tailift continues to invest in R&D to improve quality and versatility, in order to obtain the best reputation and increase the international market share. We have added to the cushion tire lift truck, with its simple, yet will-built molding. By tremendously reducing its turning radius our lift truck is the best choice to work in a narrow aisle workplace.

Easy Maintenance



Non-bolt floorboard

The floorboard can be easily removed without tools. Reduce time and quick access for service operations.



Insulated Engine Cover

Engine cover has gas-filled cylinder with on automatic locking device to assist in opening and to prevent the cover from unexpectedly closing. Easy service access reduces maintenance time. Large open space allow engineer easy maintenance.

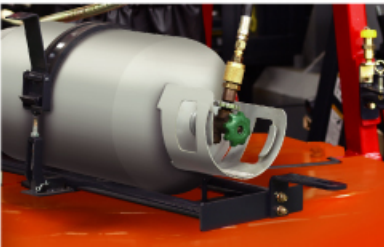
Engine

Available Model		FD15-25	FD20-35	FD40-50	FG20-35	FD40-50
Manufacturer		YANMAR	YANMAR	PERKINS	IMPCO	IMPCO
Model		4TNE92	4TNE98	1104C-44	GM 3.0L	GM 4.3L
Output	kw	33.4	44.1	64	55	90
Speed	rpm	2725	2725	2400	3000	3000
No. of cylinders / displacement	--/c.c.	4/ 2659	4/ 3319	4/ 4410	2966.59	4294

Options



swing-out LPG bracket



counterweight type



Duel wheel



Upward Exhaust Pipe I



Upward Exhaust Pipe II



Rain Guard (optional)



Super-elastic tire



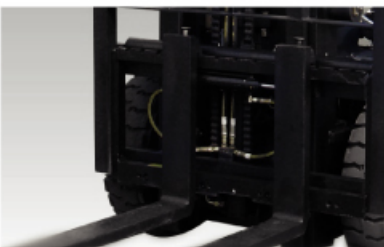
Pre-cleaner engine air intake



Cabin



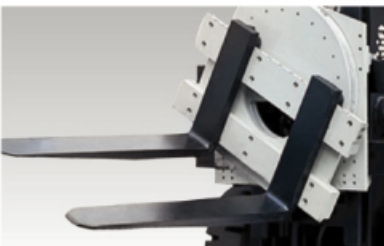
Cabin



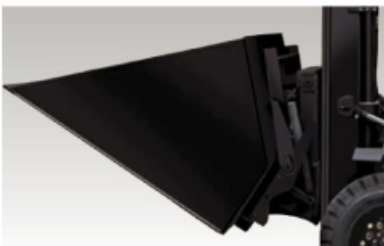
Side shift



Hinged Fork



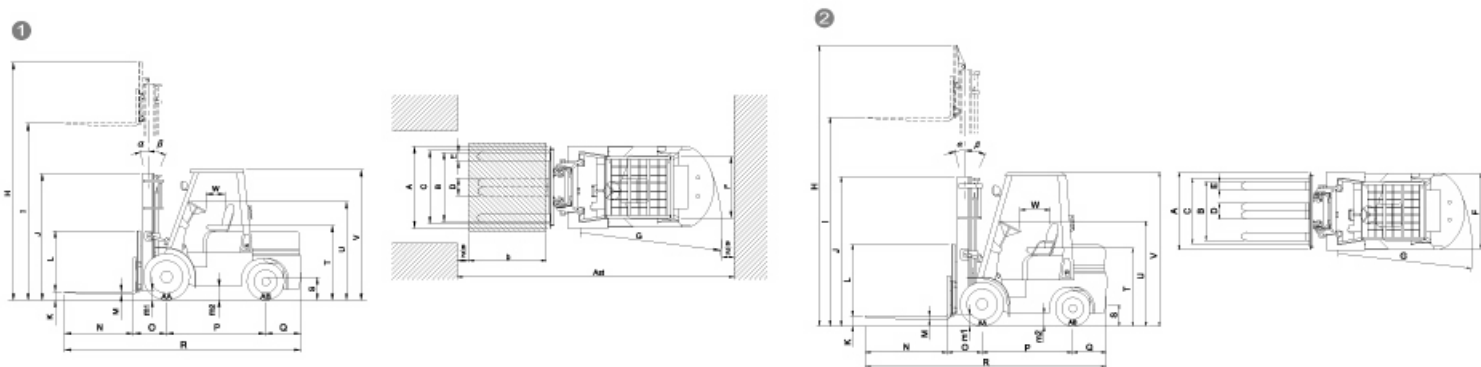
Rotating Fork



Shovel



Bale Clamp



Standard Model Specifications

ITEMS	MODEL		FD/FG15	FD/FG18	FD/FG20	FD/FG25	FD/FG30	FD/FG35	FD/FG40	FD/FG45	FD/FG50
Capacity	lbs		3000	3500	4000	5000	6000	8000	9000	10000	11000
Load center	in		24	24	24	24	24	24	24	24	24
Overall width	A		41.9	41.9	45.6	45.6	50.4	53.1	57.0	57.0	57.0
Outside width between forks	B		36.2	36.2	40.2	40.2	45.3	45.3	51.6	51.6	51.6
Front wheels tread	C		34.8	34.8	38.2	38.2	41.5	43.7	45.2	45.2	45.2
Width of two forks	D		7.9	7.9	9.4	9.4	9.4	9.8	11.8	11.8	11.8
Width of one fork	E		3.9	3.9	4.7	4.7	4.7	4.9	5.9	5.9	5.9
Rear wheels tread	F		35.4	35.4	38.8	38.8	38.8	38.8	46.8	46.8	46.8
Min. turning radius. Outside	G		76.8	78.5	85.4	88.6	95.1	106.9	112.2	114.2	120.0
Max. height overall	H		116.0	116.0	116.0	116.0	116.0	116.0	116.0	116.0	116.0
Max. fork height	I		118.0	118.0	118.0	118.0	118.0	118.0	118.0	118.0	118.0
Height of mast	J		78.7	78.7	78.7	78.7	78.7	86.2	86.2	86.2	86.2
Free lift	K		0	0	0	0	0	0	0	0	0
Height of load backrest	L		48	48	48	48	48	48	48	48	48
Max. thickness of fork	M		1.4	1.4	1.6	1.6	1.8	2.0	2.0	2.0	2.5
Length of fork	N		42.0	42.0	42.0	42.0	42.0	42.0	48.0	48.0	48.0
Distance between front and centr of front wheel	O		16.7	16.7	18.3	18.3	18.9	19.1	22.4	22.4	23.2
Wheel base	P		53.1	53.9	61.0	61.0	65.0	76.8	78.7	80.7	86.6
Distance between front and center of rear wheel	Q		18.1	19.4	18.5	20.0	20.9	20.9	21.2	21.2	21.2
Overall length	R		130.1	132.3	140	141.5	146.8	158	170.4	172.4	179.1
Ground clearance	At lowest point	m1	4.7	4.7	4.7	4.7	4.7	4.7	5.5	5.5	5.5
	Center of wheelbase	m2	7.1	7.1	7.7	7.7	8.7	8.7	9.0	9.0	9.0
Height of tail	S		10.3	10.3	12.2	12.2	13.3	13.3	15.5	15.5	15.5
Seat height	T		42.9	42.9	44.1	44.1	44.8	44.8	49	49	49
Height of steering wheel	U		57.3	57.3	59.5	59.5	59.5	59.5	65.5	65.5	65.5
Height of overhead guard	V		81.5	81.5	83.1	83.1	84.3	84.3	88.6	88.6	88.6
Space of driver's seat	W		16.5-23.6		16.7-25.2		16.9-26.8				
Dimension of front wheel	AA		6.50-10-10 P.R.		7.00-12-12 P.R.		8.15-15-12/14 P.R.		300-15-20 P.R.		
Dimension of rear wheel	AB		5.00-8-8 P.R.		6.00-9-10 P.R.		6.50-10-10 P.R.		7.0-12-12 P.R.		

ITEMS	MODEL		FG15C	FG18C	FG20C	FG25C	FG30C	FG35C
Capacity	lbs		3000	3500	4000	5000	6000	8000
Load center	in		24	24	24	24	24	24
Overall width	A		38.0	38.0	41.7	41.7	43.3	47.2
Outside width between forks	B		36.2	36.2	36.2	36.2	38.1	45.3
Front wheels tread	C		32.1	32.1	34.6	34.6	35.2	38.4
Width of two forks	D		7.9	7.9	9.4	9.4	9.4	9.8
Width of one fork	E		3.9	3.9	4.7	4.7	4.7	4.9
Rear wheels tread	F		32.5	32.5	36.2	36.2	35.2	39.8
Min. turning radius. Outside	G		69.0	70.0	76.5	78.5	82.5	89.8
Max. height overall	H		178	178	178	178	178	178
Max. fork height	I		130	130	130	130	130	130
Height of mast	J		84.3	84.3	84.3	84.3	84.3	87.2
Free lift	K		5.7	5.7	6.0	6.0	6.0	6.3
Height of load backrest	L		48	48	48	48	48	48
Max. thickness of fork	M		1.4	1.4	1.6	1.6	1.8	2.0
Length of fork	N		42	42	42	42	42	42
Distance between front and centr of front wheel	O		14.8	14.8	16.3	16.3	16.5	17.3
Wheel base	P		47.2	47.2	55.1	55.1	55.1	61.0
Distance between front and center of rear wheel	Q		17.5	18.7	17.6	19.9	23.4	23.3
Overall length	R		121.5	122.7	131	133.3	137	143.6
Ground clearance	At lowest point	m1	4.3	4.3	4.3	4.3	4.3	4.5
	Center of wheelbase	m2	4.1	4.1	4.3	4.1	4.1	4.9
Height of tail	S		9.0	9.0	10.2	10.2	10.2	11.2
Seat height	T		39.5	39.5	39.9	39.9	39.9	41.9
Height of steering wheel	U		55.3	55.3	56.1	56.1	56.1	57.5
Height of overhead guard	V		78.3	78.3	78.7	78.7	78.7	80.3
Space of driver's seat	W		16.5-22		16.7-24.4		16.7-25.2	
Dimension of front wheel	AA		18x6x12 1/8		21x7x15		21x7x15	22x9x16
Dimension of rear wheel	AB		14x4 1/2x8		16 1/4x5x11 1/4		16-1/4x6x11 1/4	18x6x12 1/8

Specification are subject to improvements and changes without notice.

Equipment And Accessories

● STANDARD ○ OPTIONAL

	FD15 FG15	FD20 FG20	FD25 FG25	FD30 FG30	FD35 FG35	FD40 FG40	FD45 FG45	FD50 FG50
Integral heavy duty overhead guard	●	●	●	●	●	●	●	●
Overhead air intake system	●	●	●	●	●	●	●	●
Asbestos free brake shoe material	●	●	●	●	●	●	●	●
Full hydraulic power steering	●	●	●	●	●	●	●	●
2-spool control valve with pressure relief	●	●	●	●	●	●	●	●
Horizontal brake	●	●	●	●				
Power-assisted brake					●	●	●	●
Hi-visibility, wide view mast	●	●	●	●	●	●	●	●
ITA Class carriage	●	●	●	●	●	●	●	●
Load backrest	●	●	●	●	●	●	●	●
1070mm forks(Cascade Kenhar)	●	●	●	●	●	●	●	●
Electric F/R control lever	●	●	●	●	●	●	●	●
Lift and tilt levers	●	●	●	●	●	●	●	●
Parking brake lever with inter-lock	●	●	●	●	●	●	●	●
Fuel water sedimenter(Diesel)	●	●	●	●	●	●	●	●
Return hydraulic filter	●	●	●	●	●	●	●	●
Transmission oil filter	●	●	●	●	●	●	●	●
Front combination lights(turn signal,)	●	●	●	●	●	●	●	●
'Rear combination lights (turn signal,tail,brake, back-up)"	●	●	●	●	●	●	●	●
Front head lights	●	●	●	●	●	●	●	●
Operator tool kit	●	●	●	●	●	●	●	●
Side view mirrors(R/L)	●	●	●	●	●	●	●	●
Charge indicator	●	●	●	●	●	●	●	●
Engine check indicator	●	●	●	●	●	●	●	●
Engine oil pressure warning indicator	●	●	●	●	●	●	●	●
Fuel gauge	●	●	●	●	●	●	●	●
Glow indicator	●	●	●	●	●	●	●	●
Hourmeter	●	●	●	●	●	●	●	●
Neutral safety switch	●	●	●	●	●	●	●	●
Water temperature gauge	●	●	●	●	●	●	●	●
High/Low speed setting					●	●	●	●
Dual operator assist grip	●	●	●	●	●	●	●	●
Non-slip floor mat	●	●	●	●	●	●	●	●
Super-elastic solid tires	○	○	○	○	○			
Cushion tires	○	○	○	○	○			
Wide tread tires			○	○				
Dual front wheel		○	○	○	○	○	○	○
High, wide type of load backrest	○	○	○	○	○	○	○	○
Wide type fork carriage	○	○	○	○	○	○	○	○
Deluxe suspension seat with seat-belt	○	○	○	○	○	○	○	○
Mast Lock system(Lift/Tilt)	○	○	○	○	○	○	○	○
Hinged forks	○	○	○	○	○	○	○	○
Tilt cylinder boots	○	○	○	○	○	○	○	○
Steel Cabin	○	○	○	○	○			
Heater (steel cabin)	○	○	○	○	○			
Windshield with wiper	○	○	○	○	○	○	○	○
Pre-cleaner	○	○	○	○	○	○	○	○
Exhaust pipe, upward	○	○	○	○	○	○	○	○
Adjustable overhead guard	○	○	○	○	○	○	○	○
Back-up buzzer	○	○	○	○	○	○	○	○
Rear head lights	○	○	○	○	○	○	○	○
Emergency flash light(Yellow/Red)	○	○	○	○	○	○	○	○
Torque converter oil pressure gauge	○	○	○	○	○	○	○	○
Fire extinguisher	○	○	○	○	○	○	○	○
Fan	○	○	○	○	○	○	○	○
Rain Guard	○	○	○	○	○	○	○	○
Hook on sideshift	○	○	○	○	○	○	○	○
Integral sideshift		○	○					
Joystick hydraulic controls	○	○	○	○	○	○	○	○
Swing-out LPG bracket	○	○	○	○	○	○	○	○
Fork extension sleeves	○	○	○	○	○	○	○	○
Fork positioner	○	○	○	○	○	○	○	○
Front cowl cover								